



MYENI GROUP

INTRODUCTION

The Myeni Group is a highly diverse group of companies specialising in the following economic sectors:

- Hospitality
- Industrial Holdings

- »» Mining Interest
- »» Steel Fabrication
- »» Ready-mix concrete and Cement products

- Property Development and Holdings
- Financial Services
- Funeral Services
- Construction, Civil works
- Quick Service Restaurants
- Offshore Investments

The Group operates from Mtubatuba, a small town 47km's north of Richard's Bay and close to the tourism spots of St. Lucia and the Umfolozi/Hluhluwe Game Park.



1. LGB INVESTMENTS

LGB Investments was formed in 2003, servicing commercial, industrial and residential markets. We are one of the largest empowered (BEE) property and construction company in the north of Zululand. We are in property development and construction. We are accredited with CIDB.

LGB Investment undertakes construction and civil works.

We supply Ready Mix concrete and concrete products.

LGB Investments manages Property ranging from commercial retail to agriculture.

LGB Investments is a property developer and Investor

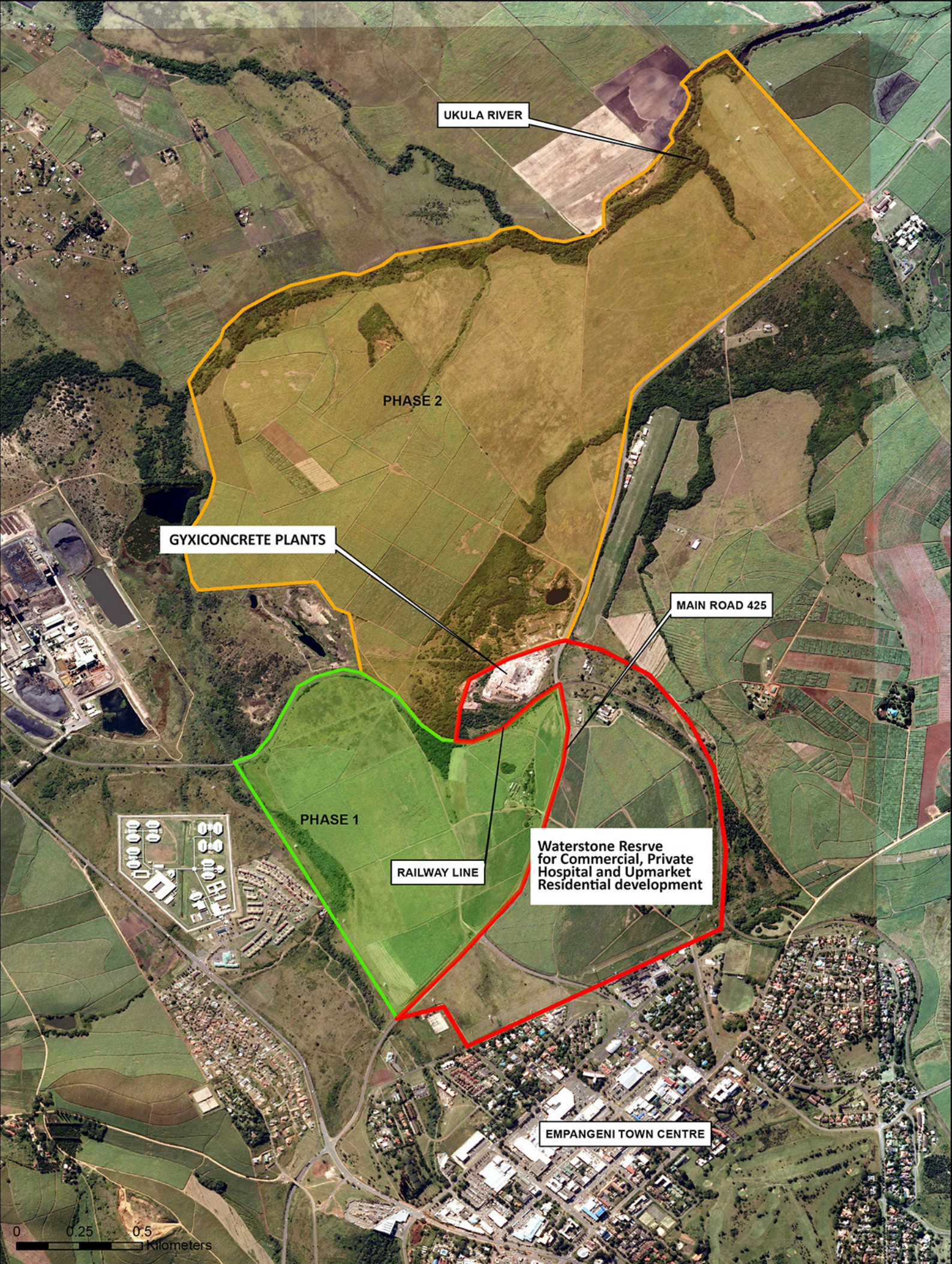
SUBSIDIARIES

- WESTSIDE (PTY) LTD (100%)
 - Water purification and packaging of water bottles.
- HLABISA PROPERTY DEVELOPERS (PTY) LTD (100%)
- MMQS (50%)
 - Developers of Low cost Housing
- MONTCLAIR PROJECT (40%)
 - Residential Property Developers
- GYXICOM (PTY) LTD (40%)
 - Ready Mix Concrete Company

1.1. WATERSTONE COUNTRY ESTATE (PTY) LTD (Empangeni Project) (70%)

This is an integrated residential and commercial development on 450 ha of canefield situated and adjoining Empangeni town in the uMhlathuzi municipal district. Dept of Human Settlement has acquired 355ha of the 450ha and appointed Waterstone to be the Implementing Agent of developing the 355ha of land. The remaining 95ha is earmarked by Waterstone for commercial (Shopping Mall) , Private Hospital and residential developments.





UKULA RIVER

PHASE 2

GYXICONCRETE PLANTS

MAIN ROAD 425

PHASE 1

RAILWAY LINE

Waterstone Reserve
for Commercial, Private
Hospital and Upmarket
Residential development

EMPANGENI TOWN CENTRE

0 0.25 0.5
Kilometers



WATERSTONE PHASES



1.2. GYXI CONCRETE (PTY) LTD (70%)

Gyxiconcrete is a manufacturer and distributor of high quality products of Ready Mix Concrete to the construction industry. We are servicing the area of Uthungulu District, Zululand District and Umkhanyakude.

After a decade of success in the construction sector, in 2013 L G B Investments CC (a subsidiary of Myeni Group) established a manufacturing and supplying of concrete business called GYXI CONCRETE. Currently Gyxiconcrete plays an important role in a very competitive environment of ready-mix concrete.

Gyxiconcrete making concrete with strengths ranging from 15 mpa to 40 mpa. Gyxi concrete is currently having plants based in Empangeni and LimeHill (Dundee).

Gyxiconcrete pride itself in producing quality ready-mix concrete. We have qualified and competitive staff and we use independent laboratory for Quality control purposes.





Build it is a retailer specialising in building materials and related hardware. It is a dynamic organisation boasting a market leading growth in the hardware and building materials industry.

Stores: Mtubatuba Build it
Kwambonambi Build it



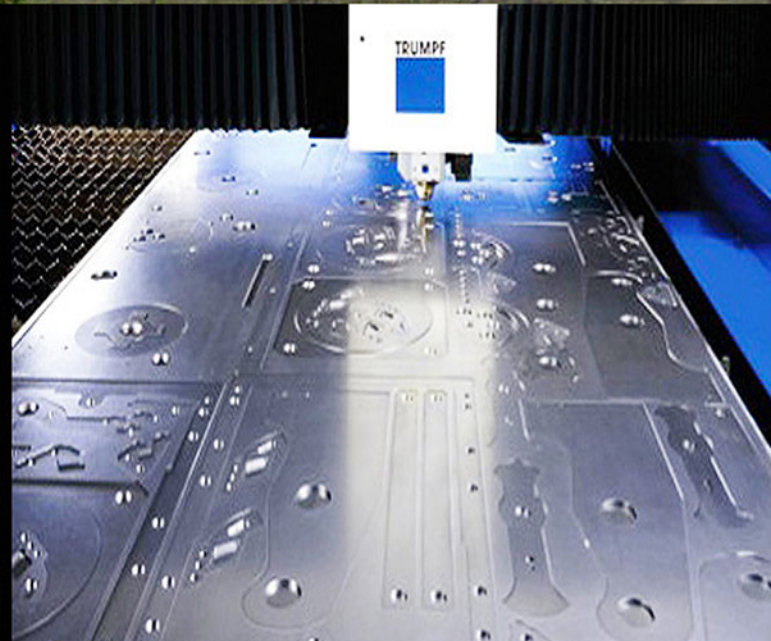
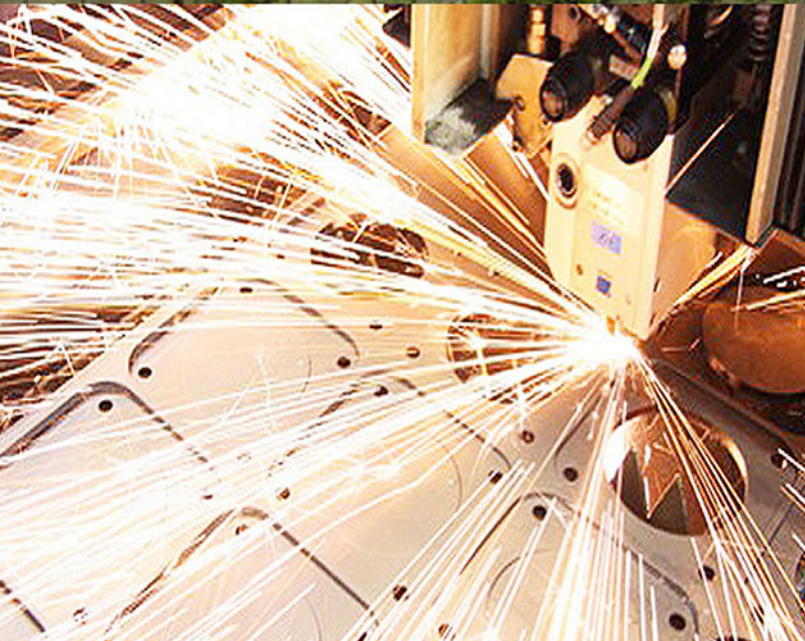
 **Shell** Ultra City - Escourt - N3 - South Africa





The Myeni Group through Nzungelezi Investments has acquired a 60% interest in Laser Junction. The impressive array of machinery together with full fabrication facilities ensures that the business remains a market leader with the flexibility, skills and knowledge to tackle a wide range of customer requirements. Laser Junction (Pty) Ltd is committed to establishing and maintaining itself as a leading supplier of precision cut, bent and fabricated metallic and non-metallic products for a diversified range of customers.

To achieve this goal we work closely with our customers, to meet their requirements and expectations. Laser Junction is a high-tech operation cutting and bending stainless steel to supply automobiles with parts. Laser Junction is nearing the completion of its second factory, 10000 sq m. under roof at King Shaka International Airport Trade Zone. This factory is due for commissioning in November 2015. The combined workforce will be 452 personnel.





NRB Piping Systems specialises in the supply, fabrication, installation and maintenance of piping systems. We are unequivocally dedicated in addressing our client's needs to produce a personalised service in respect of our different areas of expertise. We are dedicated to delivering the best quality workmanship aiming at achieving a reputation that will far exceed our vision.

We strive to be recognised within the industry as a leader through trust and integrity in respect of our business acumen, providing a complete and comprehensive service to our clients.

"NRB Piping is a serious player in its sector with major footprint in KwaZulu-Natal, Gauteng, Limpopo and Eastern Cape Provinces of South Africa. NRB Piping Kenya intends to make its presence felt in East Africa in water, gas and oil piping operations.

Our Services

- Fabrication of fittings at our workshop
- On-site installation of plastic piping systems (piping, fittings, in-line equipment and steel supports)
- On-site installation of plastic piping systems (piping, fittings, in-line equipment and steel supports)
- Butt-welding of pipe and fittings
- Extrusion welding of more complex structures
- Fusion welding
- 24 Hour breakdown service for all emergencies





MEET MEKAAR

Resorts

Meet Mekaar is the destination of choice for both domestic and international tourists. The venue has ample parking for buses and vehicles and also hosts a splendid swimming pool with its own bar.

Other amenities include:

- Air-conditioned accommodation with television sets, with sounds of waterfalls and birds.
- It features a variety of facilities for corporate functions, weddings and conferencing etc.
- Event facilities can accommodate 70, 100, 300 and 1500 people respectively.
- We currently sleep 420 guests.
- A gym, a spa and a Zipline will soon be operational by mid 2016.
- A children's centre with a variety of games, swimming pool and water rides is operational.
- Our cuisine boasts some of the best exotic and African dishes palatable to a variety of international guests.



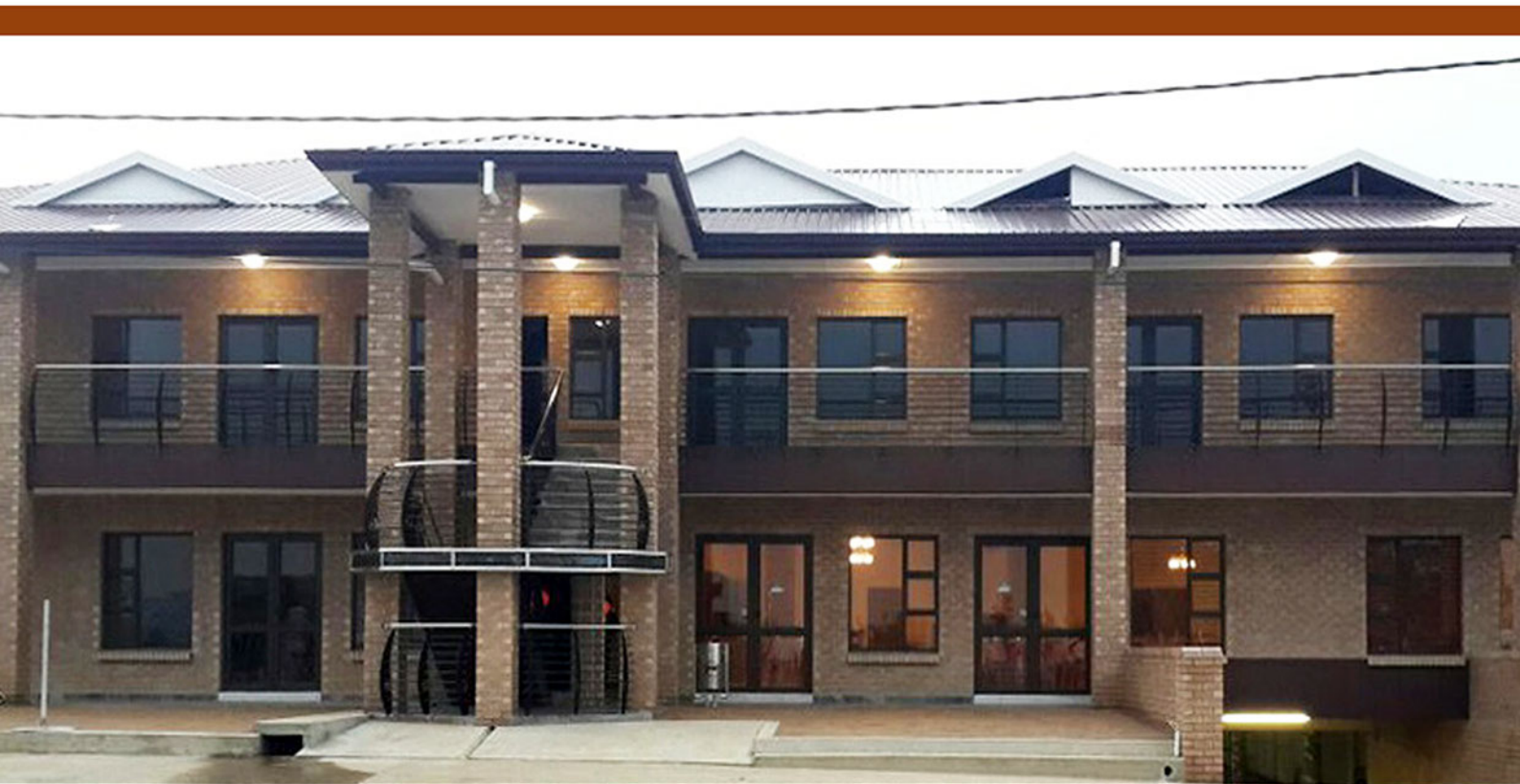


MEET MEKAAR

— *Resorts* —

MEET MEKAAR RESORTS NQUTHU

This newly opened state of the art branch of Meet Mekaar Resorts its the first of its kind in Nquthu aiming to attract tourists around the country and offering a four star accommodation, restaurant and bar services with secure undercover parking. This facility boasts 31 exquisite rooms with double beds,plus swimming pool and line shops



Ocean Beach Resort

MALINDI KENYA
★★★★★

“The Myeni Group is in the process of expanding its participation in the hospitality industry by acquiring a big stake in a Five-Star Ocean Beach Resort in Kenya”.

Individual and luxuriously appointed rooms are spread around the beautiful gardens creating a private, secluded atmosphere. The hotel offers 20 rooms and 15 suites showcasing early 20th century tropical style with wooden beamed roofs and elegant wooden floors.

The resort boasts two pools, one semi-olympic with a Jacuzzi, the second beachfront with soft entrances on both ends.



DOLPHIN WHISPER (PTY) LTD

The Myeni Group has taken a strategic view to divest from its non-core businesses such as the Fast Food sector, Currently we own Steers, Debonairs franchises in Sibaya Casino.

HLABISA PROPERTY DEVELOPERS

The Company owns property at Hlabisa, the administrative area in the Umkhanyakude District of KwaZulu-Natal, generally characterised by isolated rural communities with high levels of poverty. This company in partnership with LGB, as the Construction Company, has built the first shopping centre in the area.

MUSA MYENI FAMILY TRUST

The family trust has interests in commercial properties. The Trust is the majority shareholder in Uthungulu Investment Holdings Ltd, a public company consisting of 1100 shareholders from all over South Africa. The Family Trust has interests in various towns of KZN including Mtubatuba, Nquthu, Empangeni and Mkhuze.

SUBSIDIARIES

- EXPECTRA 248

Expectra 248 is another property owning company in the town of Mtubatuba. M Group owns 60% through the Family trust.

FINANCIAL SERVICES GROUP

In 1997, following the success of Top Top, Manaba Funeral Services and Manaba Funeral Fund commenced business. Manaba Funeral Fund is a solution for the previously disadvantaged community as it offers a range of affordable services to meet family insurance needs. It offers a variety of insurance products with tailor made benefits.

The company operates in the Northern part of Zululand with 4 branches and head office. Manaba Funeral Fund is underwritten by Nestlife Assurance. Manaba Funeral Service is a sister company of Manaba Funeral Fund. This company was the first black-owned funeral undertaking company in Zululand.

For more than 15 years, the operating principle is still the same, which is to provide and deliver caring, compassionate, dedicated personal services to grieving families.

Our mission is based on service excellence and customer centredness.

The Group aims to consolidate its interests in the following sectors;

- 1) Industrial sector: Steel, aluminium and related manufacturing and supplier of a variety of products.
- 2) Property Development and Construction.
- 3) Construction Materials Supply Sector.
- 4) Services Sector; Hospitality, and Waste Management.
- 5) Limited Mining interests.

Conclusion

The Myeni Group of Companies has active interests in Waste Management and Treatment, mining through Ungoye Mining (Pty) Ltd.



PERSONNEL

Each company has experienced and dedicated and professional staff to facilitate the client's and business' requirements at all times. The Myeni Group is seen as a major business player creating hundreds of jobs in the area .It actively participates in local functions and supports the regional initiatives around the promotion of tourism in the region.

The founder of all Myeni Group companies is Musawenkosi Bethuel Myeni. He is ably assisted by an array of professionals, including accountants, engineers, technicians, managers and administrative technical staff, with our legal services outsourced. The Group employs just over a 1000 people.

Musawenkosi ("Musa") Myeni, an astute businessman with years of corporate experience, is the founder, owner and executive Director of the Group. He is very experienced in both national and international business. Musa has held various senior management positions in the private sector as well as vast experiences in the political arena having been a Member of Gauteng Provincial Legislature (MPL); Chairman of the Portfolio Committee Urban and Rural Planning and Development; and involved on various Government Committees such as Environmental Affairs, Finance and Economic Affairs; Public Account and Social Welfare and Pensions. He is the Chairman of The Uthungulu Group of Companies operating in Durban and Chairman of Tsogo Sun KZN (SunCoast Casino).

He holds a B.A. & U.E.D from University of Zululand Natal, HIDR (M.PHIL) degree from Geneva University Institute of Higher Education in International Relations and a P.M.B. degree from Harvard Business School USA.

MYENI GROUP MANAGEMENT

Mr M B Myeni
Myeni Group Managing Director

Mrs CB Myeni
Coroperate Director

Mr M V Myeni
COO LGB/ Gyxiconcrete

Mr D Myeni
Operations Director LaserJunction

Mr N C Mshaba
HR Myeni Group

Mr C S Ngcobo
Financial controller Myeni Group

Mr P Letele
General Manager Gyxiconcrete

Miss T Khumalo
General Manager Meet Makaar Umfolozi

Ms Thembi Mazibuko
General Manager Meet Makaar Nquthu

Mr Wayne Evans
MD LaserJunction

Mr Craig Parsons
General Manager Dolphin Wispher

TJ Duvenhage
Mtubatuba Build it

Rudi Thiart
Kwambonambi Build It

CONTACT DETAILS

Address:

PO Box 5890

Lot 48 Jan Smuts Venue

Mtubatuba

3935

Tel: 035 550 2051

Fax: 035 550 0083

Email: toptop@mweb.co.za, info@myenigroup.co.za

www.myenigroup.co.za

Myeni Group of Companies (Pty)

